

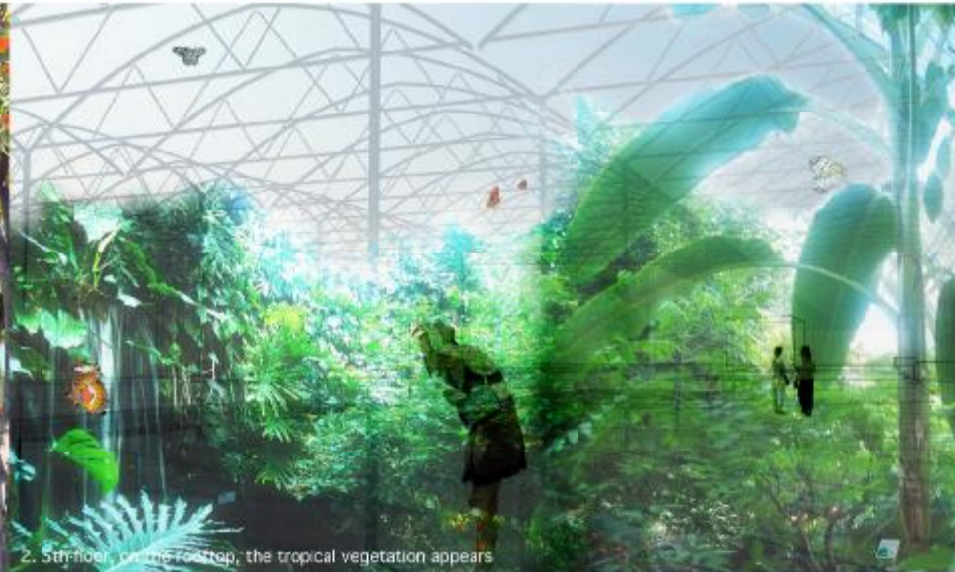
We think the library as more than just a building:  
 It is the combination of intertwined public spaces of different nature, opening, and climatic conditions,  
 all organized and united by the library itself.  
 It creates there a very strong capacity for cultural and leisure activities,  
 a place available for cultural, social, and creative purposes.

The building is wrapped in a very delicate and soft envelope,  
 a kind of artificial cloud which protects it from the cold weather in winter  
 but is totally removable during hot summer days.

The required programme (library, offices, auditoriums)  
 takes place in a permanent and simple structure invaded by tropical gardens.  
 The additional programmes chosen have a potential of public-oriented events,  
 to complement and enhance the cultural and leisure activities provided by the library.



1. 5th floor, the panoramic orange tree garden with the vegetation of the tropical gardens appearing



2. 5th floor, on the rooftop, the tropical vegetation appears



3. 4th floor, the library's second level with a view over the library's garden.



4. Tennis courts on the the multifunctional space in relation with the streets and the outdoor space in the background.



5. Art exhibition on the multifunctional space.



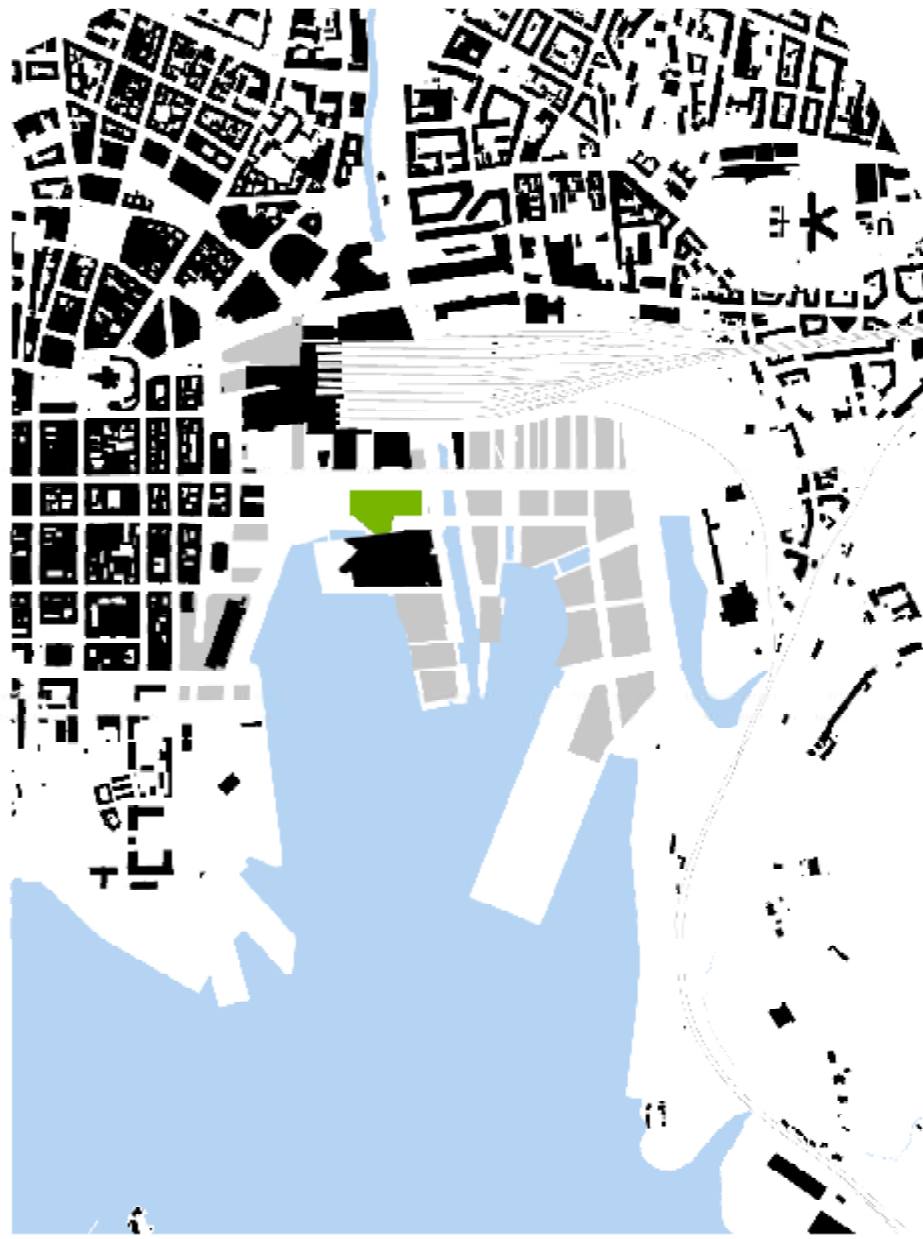
6. 3rd floor : the library's first level, a vast open space organized by the tropical gardens.



7. View from the sea.



8. View from the city



STATION PLAN - 1/5000

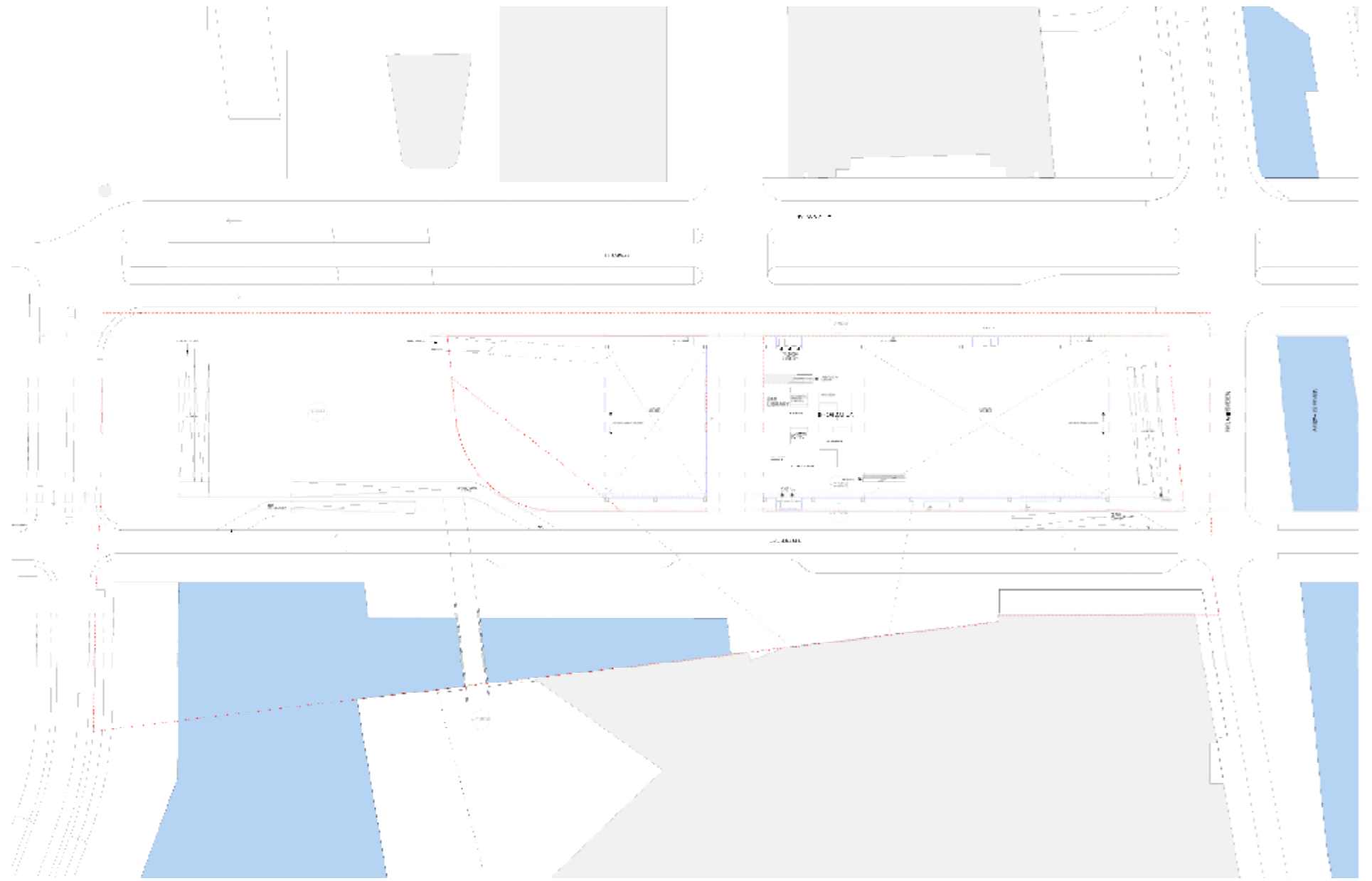
The multifunctional space has a huge surface and a high ceiling height and allows a very wide range of activities and events - from a contemporary art exhibition to a sports competition, a concert, a fashion show or a public gathering, a congress, a festival...

The proximity with the city center and the main train station make this place a very attractive location for different kinds of events.

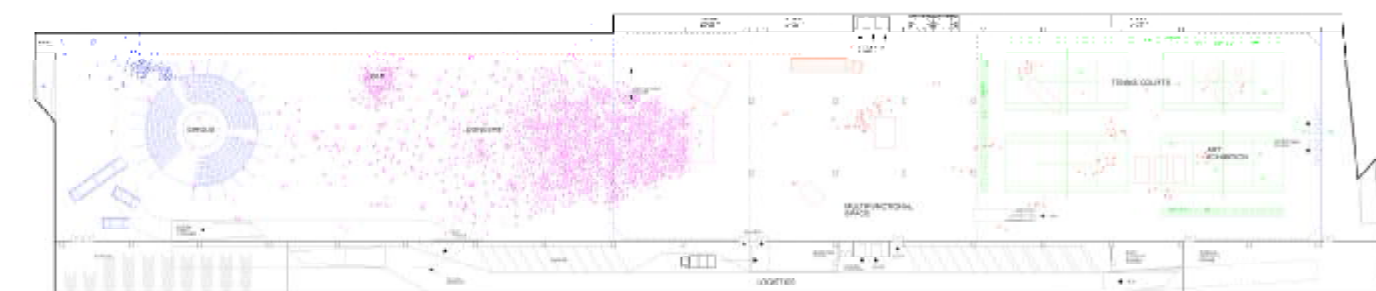
It can open wide to the adjacent exterior space to become one big stage or platform: the facades on both east and west sides can totally open using a retractable plane hangar's door.



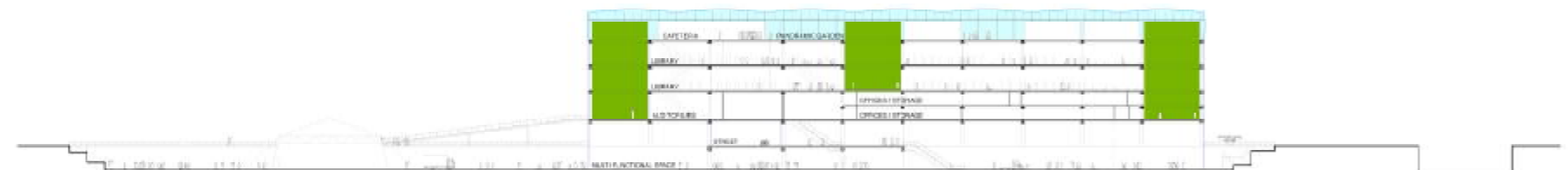
9. View from the city at night



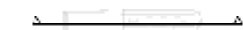
GROUND FLOOR AREA ACCESS - 1/5000

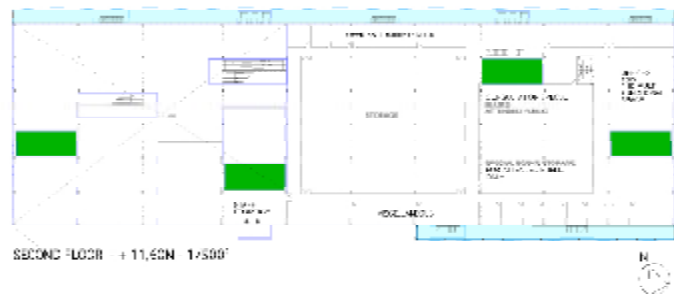
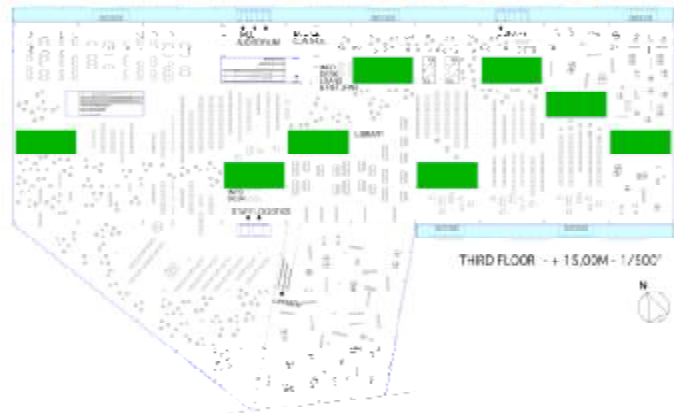
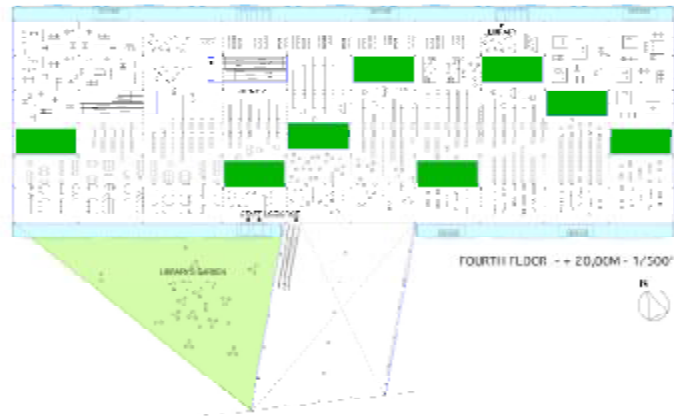


BASEMENT FLOOR - -3,00M - 1/500



LONGITUDINAL SECTION - 1/500





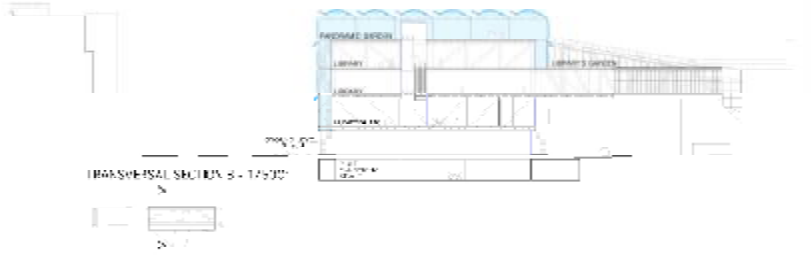
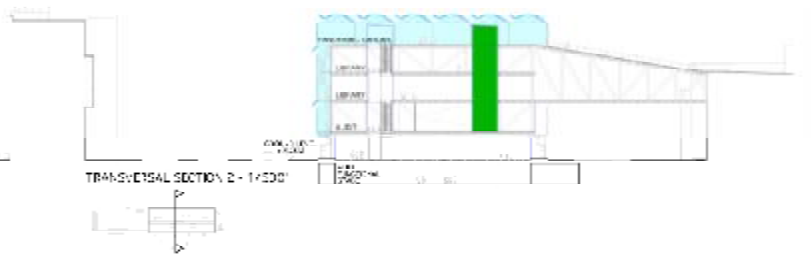
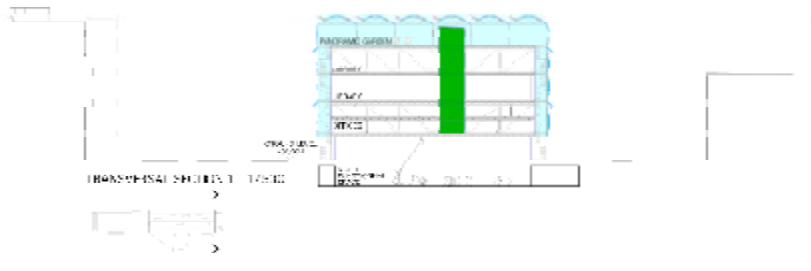
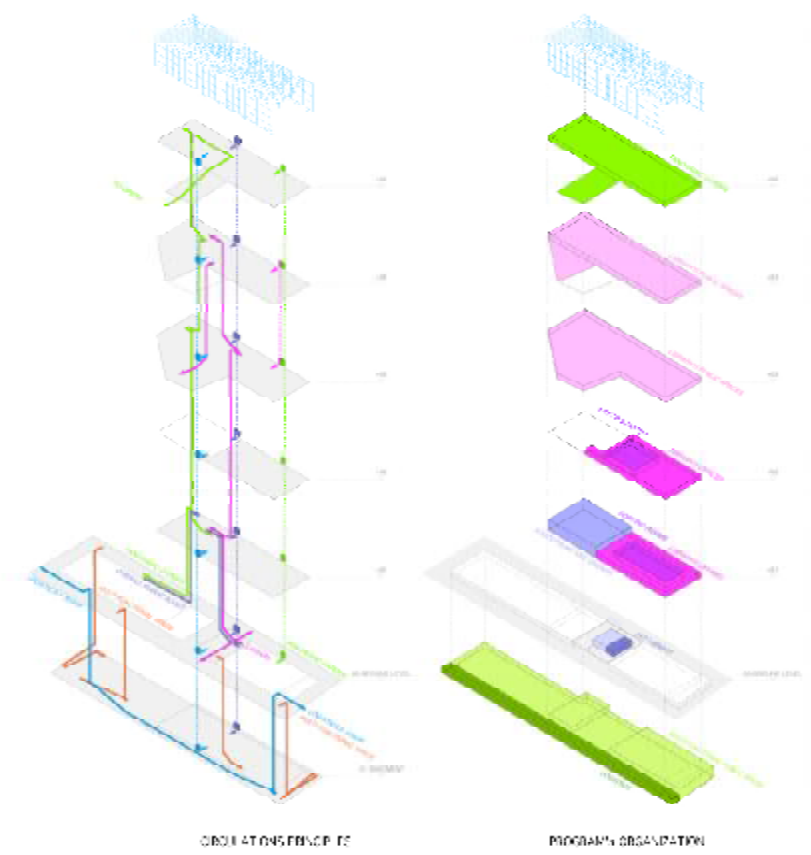
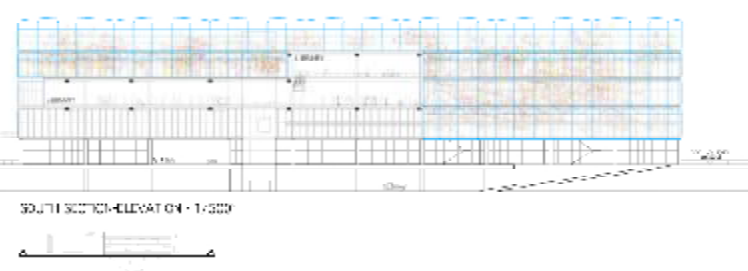
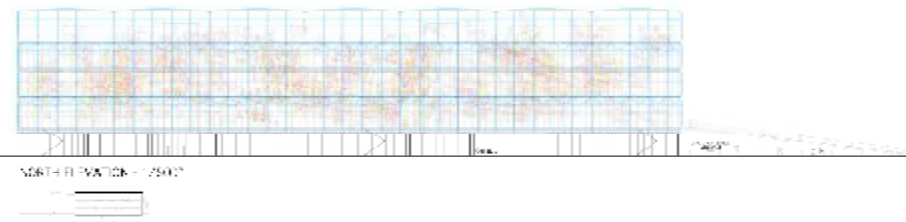
Above the library, a large orange tree garden opens up over the sea.

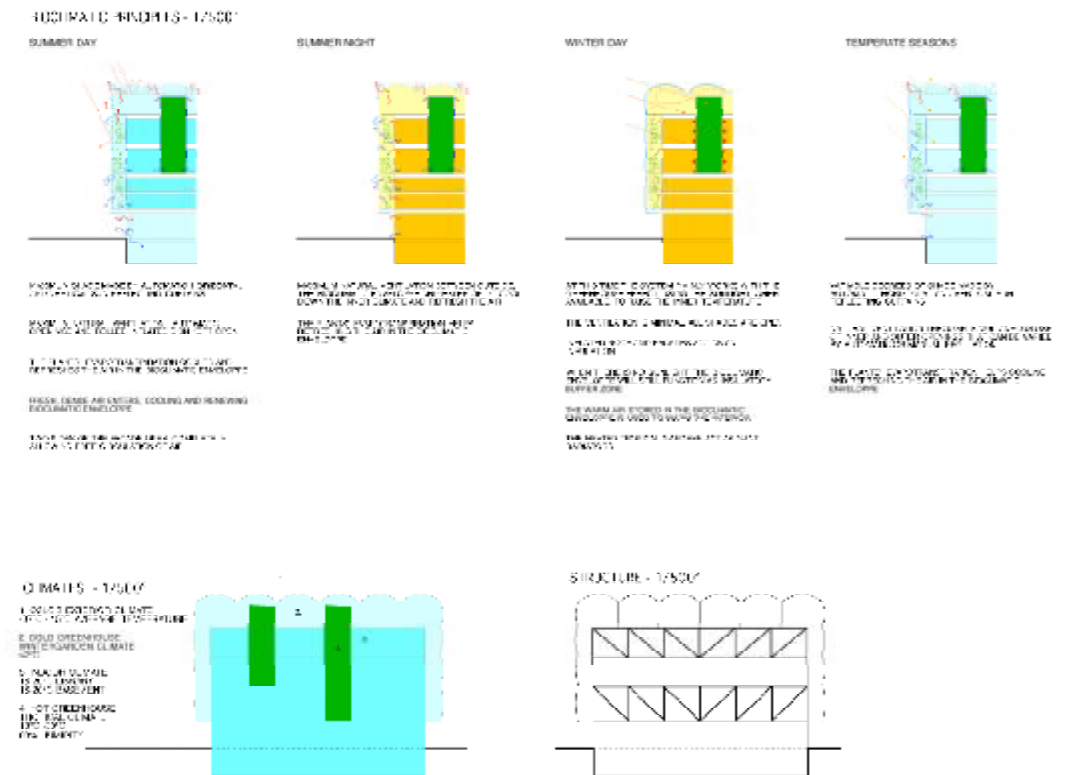
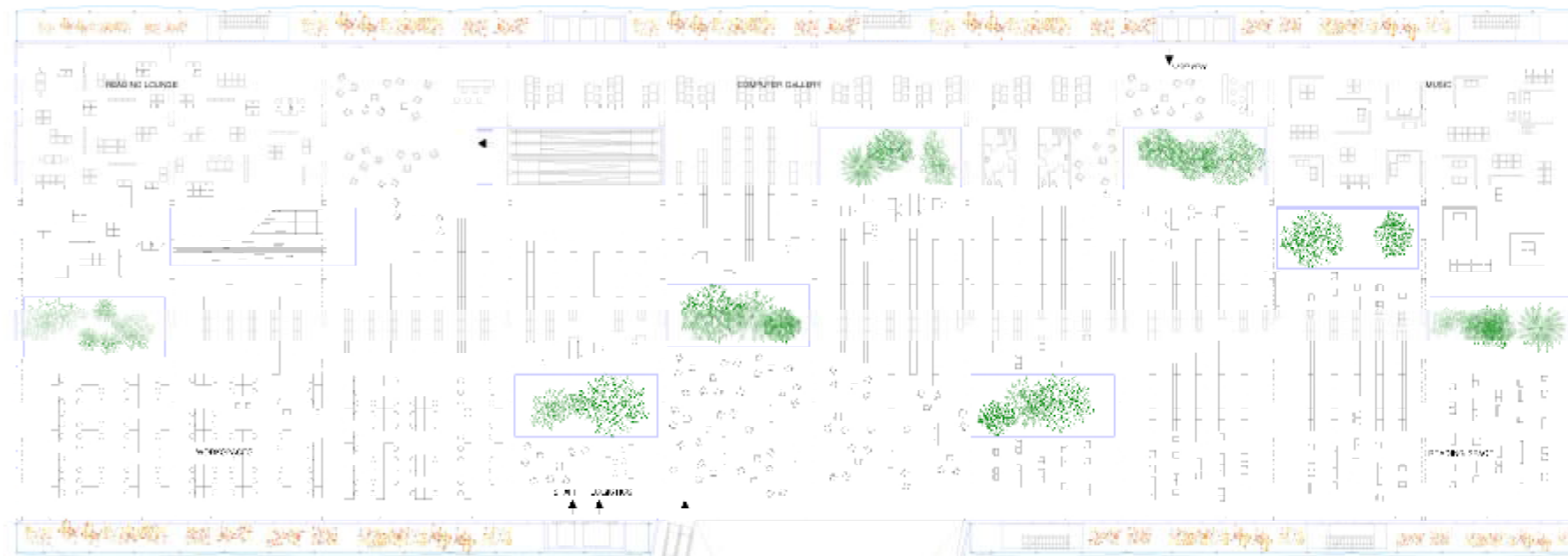
During winter it will be covered by the inflated transparent skin to provide a privileged climate.

In the summer, the inflated skin will be opened. It will become an open-sky public garden connected to the opera house roof's promenade.

The rooftop garden functions as the inverted mirror of the sub-level: Whereas the sub-level is tied to the streets but concentrates the views to the activities it shelters, the rooftop garden offers a spectacular panoramic view over the sea and the opera house, at a high level above the city's life.

Both spaces are connected through the library's building, from the streets to the Opera House's roof.





We believe the first quality of a reading lounge is a beautiful, controlled light, a very simple use and a quiet atmosphere here.

The collections are displayed on two levels on the third and fourth floors as vast "reading carpets" invaded by the beautiful tropical gardens. The tropical gardens bring a soft light to the most central parts of each level and create a transition between but open areas. There are no partition walls. The east and southern parts of each level benefit from a spectacular view over the sea.

Consulting and reading areas are provided with multiple conditions of light, sights and climates to accommodate the best conditions for a specific person and a specific media, at a specific moment of the day or the year... Our aim is to provide a variety of pleasant spaces where the people can read, gather or study with pleasure.

The reading carpet is like a collection of repetitive items (books, reviews, DVDs, chairs, shelves, people, gardens and so on), all displayed with different densities to allow multiple use, flexibility and re-organization.



RE-DESIGNED READING CARPETS - 1/200

